

During the spring of 2017 Ozroll began the process of diversifying the product portfolio again by entering into the outdoor blind market. In an industry dominated by manual drive options, Ozroll found a point of difference by offering simple, attractive and easy to install automation. Ozrolls 12V rechargeable drive system was already sought after by blind manufacturers internationally, which led to the development of drive kits to suit a wide range of different awnings and screens as a retrofit option.

After extensive market research, Ozroll chose to affiliate with a well-known and trusted local brand, known as Slidetrack. The patented Slidetrack system had been supplied on thousands of installs Australia wide over the past decade, using Australian sourced, heavy duty and high-quality components. By including Ozroll Drive Systems in a fully assembled Slidetrack product, distributors for both brands then had the opportunity to boost their sales and grow the motorised segment of the market Australia wide. A year later, after realising the synergy between the brands, the Ozroll acquisition of Slidetrack became official and fully assembled, custom made blinds were in production at Ozroll headquarters in Dry Creek, South Australia.

Working closely with Slidetrack's original designer, Ozroll is continuing product development based on distributor feedback. An industry leading locking mechanism that can be operated by foot or with a pull-down stick has been released and Ozroll Roller Shutter boxing has been adapted to the blinds to offer a very affordable, sleek, fully enclosed headbox. Ozroll is now offering the highest quality fully assembled outdoor blind in the industry, with the widest range of control options, through a growing network of distributors.

FEATURES AND BENEFITS

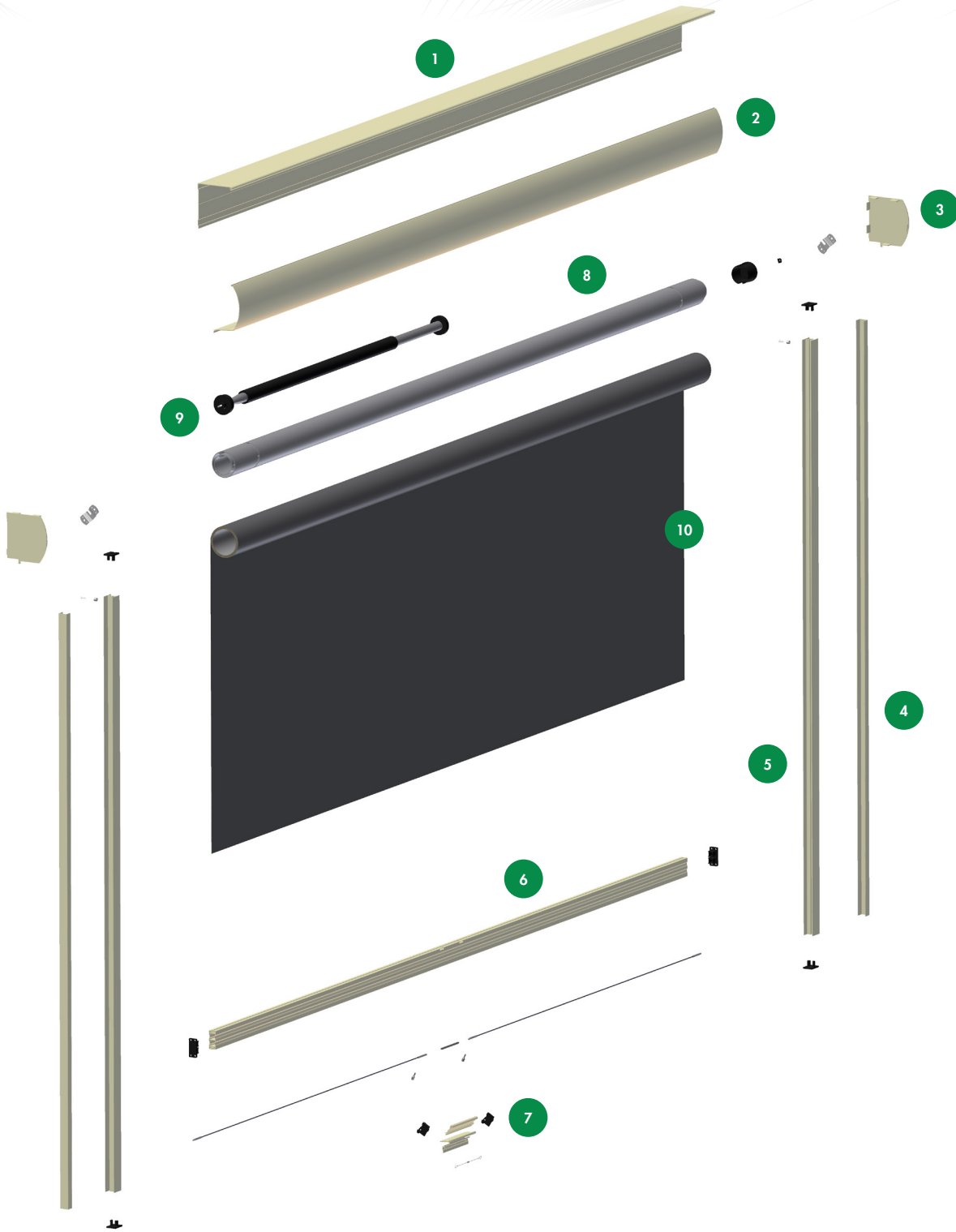
- Fully Restrained in Tracks
- Sun Protection and Shading
- Breeze Control
- Privacy
- Consistent Build Quality
- Variety of Design Options
- Wide Range of Colour Choices
- 85%, 94% and 99% Block-Out Fabrics, Plus also PVC Available
- Design and Patent Protected



WHY CHOOSE SLIDETRACK BLINDS?

- Heavy duty bottom bar supplied as standard with unique locking handle available
- Fabric is restrained on all four sides to prevent excessive fabric movement and noisy flapping
- Widest range of mounting options including brackets, extruded and roll formed aluminium
- Wide range of fabric choices, including PVC, most with a 10 year manufacturers warranty
- Side Spline is hidden within the guide tracks
- Supplied ready to install with Solar, Battery rechargeable, Somfy 240V or manual (spring assist and crank operated) options available
- Blinds operate well with drops up to 3.5 meters and spans up to 6.6 meters
- Heavy duty top tube supplied as standard, with unique reducers built in to make fabric tightening simple and effective
- Special patented mounting channels are available for fixing to circular columns and to angled surfaces
- 10 business day turnaround or less once order is accepted
- Distribution Australia wide using the strongest of packaging to prevent any time-consuming freight damages
- 100% Australian aluminium used with marine grade stainless steel fixings – ideal for coastal areas
- Key lockable bottom bars available
- Minimal use of plastic components reduces degradation with prolonged UV exposure
- The bottom bar is held within full length channels on both sides, resulting in a very strong design and no visual wear marks over time.
- Locks can be offset to one side and separate locks can be fitted to both sides of the blind if required
- Blinds can be sign written at a small cost, perfect for businesses and commercial applications
- Ozroll blinds are custom made in Adelaide to suit each individual requirement, providing quality and consistency with each job

COMPONENTRY



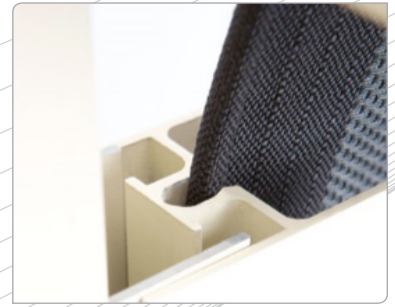
- 1 Headbox back
- 2 Headbox front
- 3 End plate
- 4 Channel
- 5 Side Track

- 6 Bottom Bar Assembly
- 7 Ezylift Latch
- 8 Axle Assembly
- 9 Spring
- 10 Skin

BOXING, CHANNELS AND TRACKS

The tracking system by Slidetrack is a patented extrusion, engineered to restrain outdoor blind skins with welded splines. The unique channel shape was designed specifically to encompass and guide the spline within a secure channel.

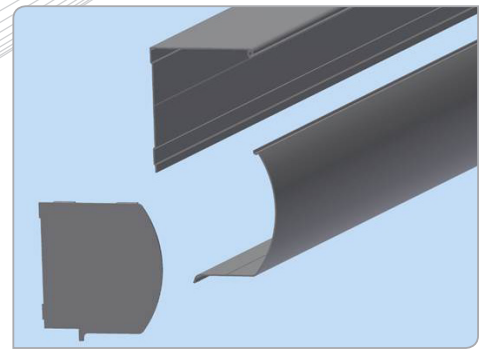
These tracks offer not only strength and durability, they also provide an attractive finish by concealing the spline within the tracks and hiding the weld from view when installed. These tracks can be used with a range of guide and boxing options to suit a huge variety of shading applications.



BOXING

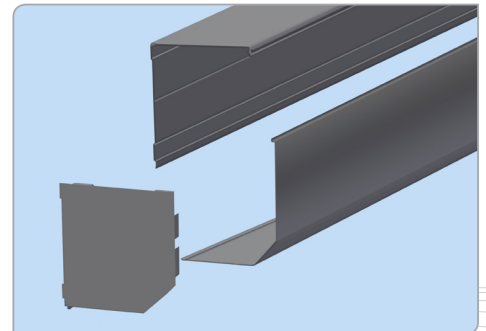
145MM EXTRUDED ALUMINIUM HEAD BOX

This unique head box is a two-piece pelmet produced with extruded aluminium and finished with specialised end caps. The fully enclosed head box offers a smooth shape for an attractive finish, with industry leading strength due to design and thickness of material. Tested on blinds as wide as 6600mm, this is the ideal option for wide spans or for powder coating, when trying to avoid warping or bowing.



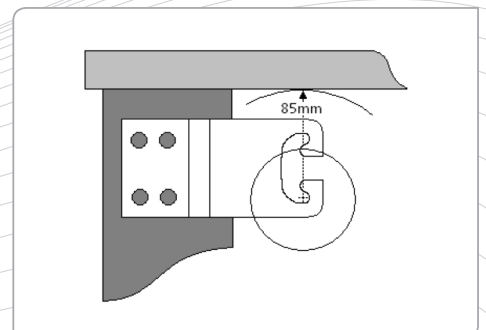
150MM ROLL FORMED ALUMINIUM HEAD BOX

The roll formed head box is a two-piece pelmet, commonly used for roller shutters, slightly modified to suit outdoor blinds. Ozroll's square roller shutter end plates have been adapted to support the unique Slidetrack top tube, creating a fully enclosed head box which protects the rolled up skin up to a maximum of 4600mm in width. This boxing offers a professional look at a cost effective price.



BRACKETS

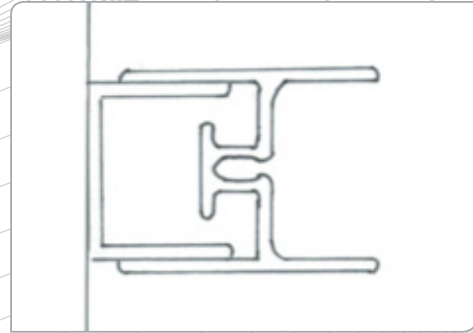
Brackets are available to support the top tube in situations where boxing is not suitable or pricing is prohibitive. The top tube locators can be dropped into the brackets, which must be fitted to allow enough room for the fabric to build up around the roll. It is important to consider when selling brackets without boxing that, when the skin is rolled down, there is an open gap left above the top tube.



CHANNELS & TRACKS

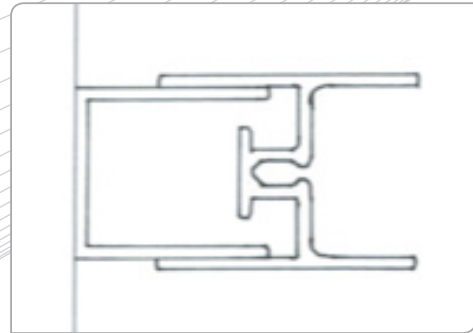
STANDARD CHANNEL

The most commonly used channel, at 23mm deep, you simply fix the channel to the application surface & sit tracks in place. Each channel has +/- 5mm built-in adjustment. When happy with the blind's operation, fix track to channel. If surface is square and measured correctly, there should be 5mm of channel visible when looking at the front of the blind.



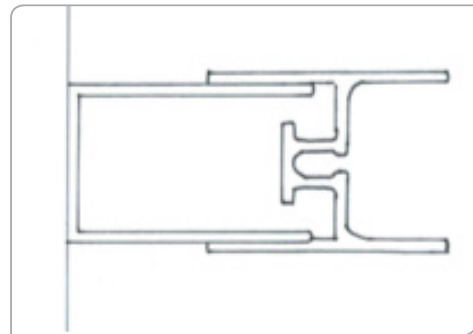
DEEP CHANNEL

Deep channels are 10mm deeper than standard. Installation method is exactly the same – this channel is simply an option to use for neatly overcoming protruding bricks or copper piping.



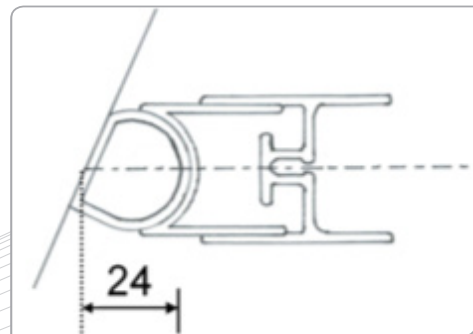
EXTRA DEEP (GEARBOX) CHANNEL

21mm deeper than standard. Developed to accommodate the extra width of a gearbox, or used where certain out of square installations demand a greater tolerance.



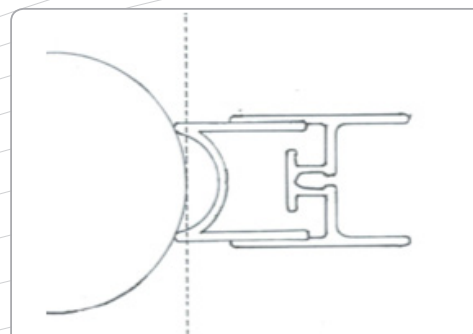
ANGLED CHANNEL

For fixing to angled surfaces. Measure using the fabric as your line to the wall (dotted centre line in diagram). Drill a pilot, then a 13mm diameter hole in the flat tube for your driver to fit through. Mount to wall. Place the curved channel over the top, (covering the 13mm holes.) Adjust to required angle and fix to flat tube with rivets or size 10-16x16mm tek screws.



SMALL COLUMN CHANNEL (OR CURVED CHANNEL)

For fixing to columns smaller than 200mm. For larger diameter columns a standard channel can be used. Simply fix to column, taking care not to over-tighten, as this may bend the channel edges out of shape.



TECHNICAL SPECIFICATIONS



TECHNICAL SPECIFICATIONS

Maximum Width	6600mm
Maximum Area (m ²)	21
Standard Track Dimensions	50mm x 32mm
Bottom Bar Size (Heavy Duty)	62mm
Standard Axle (Heavy Duty)	84mm circular
Bottom Bar Weight (per metre)	1.27kg

BOXING OPTIONS

Box Type	Maximum Height Motorised or Gearbox		Maximum Height Manual	
	MESH	PVC	MESH	PVC
145 Extruded	3200	3100	3100	3000
150 Roll Formed	3500	3300	3300	3200
Mounted In Brackets	3500	3500	3500	3500

FEATURES & BENEFITS

- Creates useable outdoor space at minimal cost
- Designed to be long-lasting, with only a few plastic components
- Side spline is shielded
- Heavy duty top tube and bottom bar is standard
- Locks for manual blinds can be single or double-sided, and offset
- Bottom bar is located within its own channel means no wear marks and very strong design
- Bottom bar can be locked up for security in public areas
- Intermediate locking positions are easily provided on manual blinds

Our Verandah Screen has been proved in thousands of installations in Australia and overseas over eight years and is protected by Patents and Registered Designs. It enables customers to create viable outdoor spaces in home and cafe situations at a fraction of the cost of alternatives.

Components are Australian sourced and designed to last for years in our conditions. Few plastic parts and no wear marks means they keep looking good with minimal maintenance. Heavy Duty top tubes and bottom bars are supplied as standard for peace of mind and reduced fabric sag.

With manual blinds and locks can be offset, and can be supplied double-sided. Intermediate locking positions can be easily provided to prevent the blinds creeping up.

CONTROL OPTIONS

MANUAL



Spring Assist *4500mm max width



Gearbox *5000mm max width

MOTORISED



ODS with E-Port



E-Trans with Solar PRO

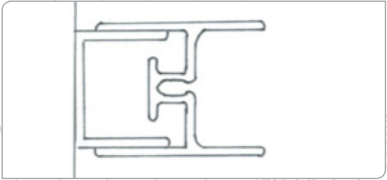


SOMFY 240V RTS with Transmitter

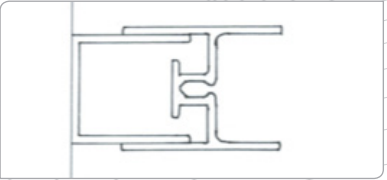
MOUNTING OPTIONS

INSTALLATION TIP: Fix channel to surface & sit tracks in place. Each channel has +/- 5mm built in adjustment. When happy with the blind's operation, fix track to channel. If the surface is square and measured correctly, there should be 5mm of channel visible on both sides when looking at the front of the blind.

STANDARD CHANNEL

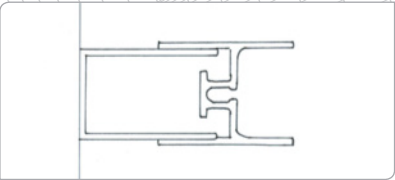


DEEP CHANNEL



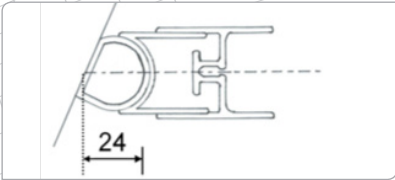
*10mm deeper than standard

EXTRA DEEP CHANNEL (GEARBOX)



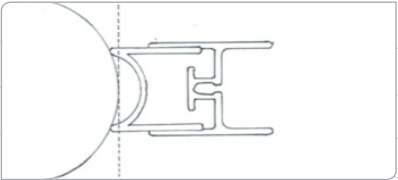
*21mm deeper than standard

ANGLE CHANNEL



*For fixing to an angled surface

ROUND COLUMN CHANNEL



*For fixing to circular columns

CONTROL OPTIONS

Slidetrack Blinds by Ozroll provide Australia's widest range of ready to install control options available on the market. This includes the conventional 240V and spring assisted manual operation, but with contemporary enhancements, such as an Ezylift handle for simple but strong locking. Best of all, the exclusive range of Ozroll 12V rechargeable drive systems can be used, which is perfect for providing users with motorisation without any need for electrical hardwiring.

MOTORISED

E-PORT



The E Port control is a removable battery unit which drives Ozroll's range of Tubular motors using power stored from charge through an AC adaptor.

SOLAR PRO



The SOLAR PRO module contains a solar panel, a battery and smart RF technology inside the same unit, meaning you can power your blind using energy from the sun and control it with a hand held remote.

SOMFY 240V



Ozroll offers Somfy motors as a 240V option in both wall switch or remote operated. The exclusive LTN range offers a cost-effective option, or the Orea provides a soft stop mechanism.

MANUAL

SPRING ASSIST WITH EZYLIFT



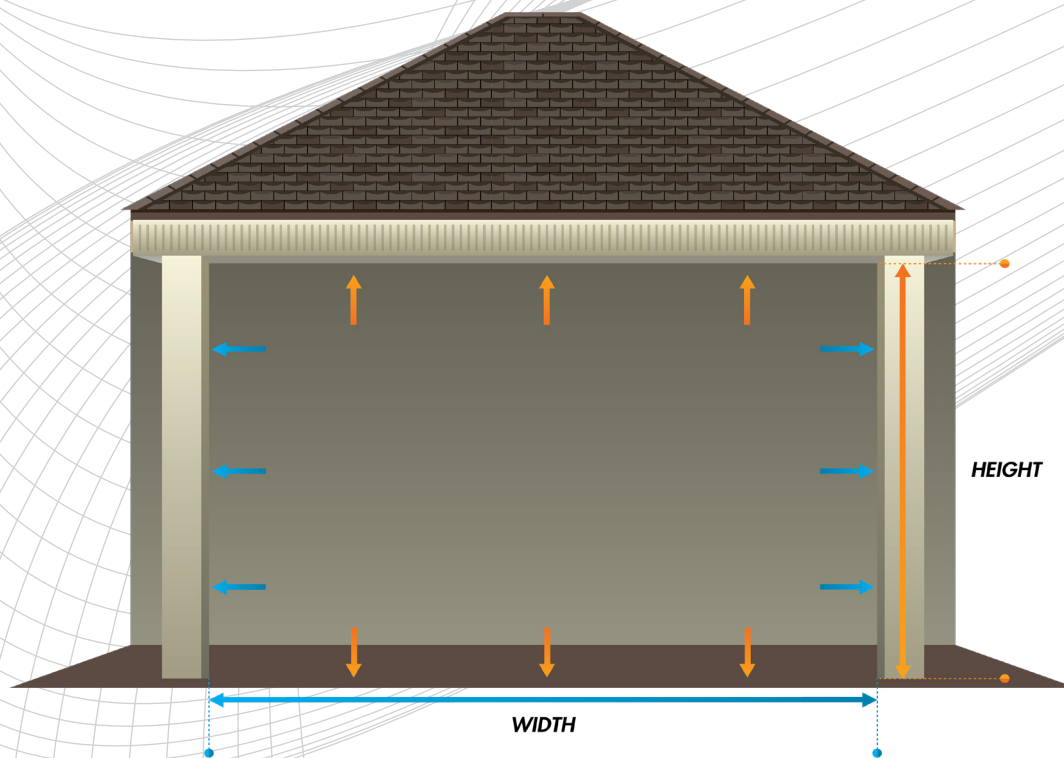
The manual Spring Assist option is a common choice for Outdoor Blinds across Australia, however Slidetracks unique extruded aluminium Ezylift handle provides premium strength with effortless operation.

GEAR BOX



Gearbox operation is an traditional system, whereby the user manually raises the blind with a crank handle which hooks into an eye outlet. This type of control must be fitted with extra deep channels.

HOW TO MEASURE



Firstly, establish how you will want the blinds to be mounted; face fix or reveal fix.

Check that you have a good fixing point for the head box (you can screw through the ends, the back or the top of a fully enclosed headbox).

REVEAL FIX

- 1 Accurately measure the top of the opening. Look for the narrowest point where the hood will be slid in and where it will be mounted. We will make the hood 2mm narrower than your advised top opening.
- 2 Measure the centre and bottom openings and record.
- 3 Check both sides to see if they are level horizontally. Make a note on your order if a side is out by more than 10mm.
- 4 Measure the drop from the top of the opening to the ground.

FACE FIX

- 1 Measure the points at which the headbox will be fitted, outside of headbox to outside of headbox, and record as the top measurement.
- 2 Normally the centre and bottom measurements are the same.
- 3 Measure the drop from the top of the required hood position to the ground.
 - For a single opening, we recommend adding 55mm to each side of the opening measurements (110mm overall) for final width measurements. This will keep the fixings for mounting the face fix angles away from the corners for strong fixing points and so that the tracks will not be visible from the inside of the opening.
 - For multiple adjacent openings, pairs of blinds can be measured to meet against a single face fix angle, effectively butting up together with channels fixed back to back on either side of the angle.